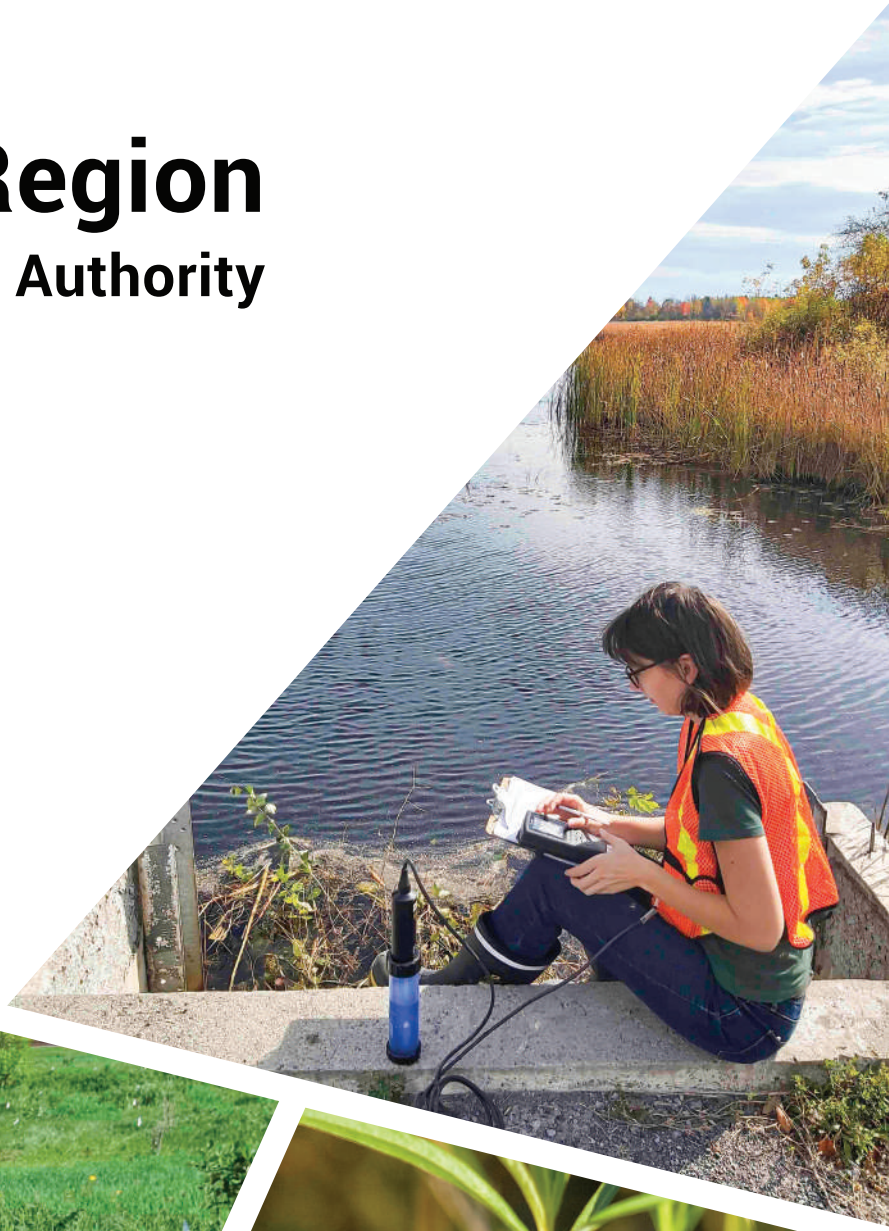




Raisin Region Conservation Authority

Annual Report 2022



Top:
Surface water quality monitoring
station in North Glengarry.

Left:
Tree planting event in the City of Cornwall.

Right:
A Virginia rail forages among wetland vegetation at
Cooper Marsh Conservation Area in South Glengarry.



The RRCA's Board of Directors is comprised of eight appointed representatives from its five member municipalities. Pictured, from left:

TOWNSHIP OF NORTH STORMONT
Robert Lefebvre

CITY OF CORNWALL
Carilyne Hébert
Claude McIntosh

TOWNSHIP OF SOUTH STORMONT
David Smith
Bryan McGillis

TOWNSHIP OF SOUTH GLENGARRY
Martin Lang
Lyle Warden

TOWNSHIP OF NORTH GLENGARRY
Jacques Massie

RRCA GENERAL MANAGER
Richard Pilon



2022 RRCA Chair Martin Lang.

MESSAGE FROM THE 2022 CHAIR

In 2022, the Raisin Region Conservation Authority's (RRCA) Board of Directors and its team of 17 staff members and 13 summer employees continued to protect people, property, and the environment within our jurisdiction. Year after year, RRCA's watershed-based approach to conservation allows our five member municipalities to work together with nature to secure a better environment and healthy future for the region.

Last year, RRCA again broke records while supporting safe and sustainable development by reviewing 333 development applications. We were pleased to learn that our Source Protection Committee Chair, Raymond Beauregard, was reappointed to his vital leadership position by the Ministry of the Environment, Conservation and Parks. As well, our Conservation Areas received several substantial enhancements and we were privileged to receive 115 acres of environmentally significant forests from the Township of South Glengarry for perpetual preservation. We also continued strengthening the health of our watersheds by planting 58,000 trees, participating in a new grassland stewardship program, initiating wetland restorations, and supporting agricultural best management practices by local farmers.

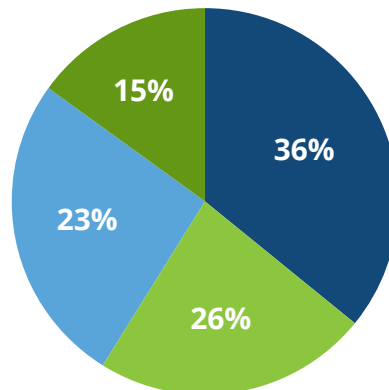
2022 saw the end of COVID-19 restrictions, permitting the RRCA to fully resume engaging the community in conservation through workshops at the Cooper Marsh Visitors Centre, community tree plantings, and popular events such as our Family Fishing Day and Raisin River Canoe Race.

I am honoured to have been chosen to continue serving as Chair in 2023, and I welcome our 2023 Vice-Chair, South Stormont Mayor Bryan McGillis. Of course, we remain grateful for our strong community partnerships and the unwavering support from our five member municipalities.



2022 RRCA Vice-Chair David Smith.

FUNDING CONSERVATION: RRCA 2022 Funding Sources



- Authority Generated:** \$1,202,816
- Municipal Levy:** \$888,641
- Government Grants:** \$787,773
- Partners:** \$498,262
- 2022 Total:** \$3,377,492



SCAN TO LEARN MORE ABOUT THE RRCA'S PROGRAMS AND SERVICES



RRCA CONTRIBUTES TO ST. LAWRENCE RIVER (CORNWALL) REMEDIAL ACTION PLAN

In 2022, under the St. Lawrence River Remedial Action Plan in partnership with the River Institute and the Mohawk Council of Akwesasne, the RRCA delivered and supported various projects to improve the health of the River. The RRCA initiated a coastal wetland restoration project, continued to support farmers with the implementation of agriculture best management practices, and helped conduct water quality monitoring in tributaries, tributary mouths, and offshore areas to further assess the status of eutrophication.



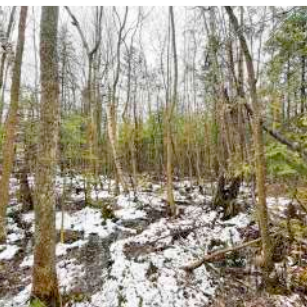
ANOTHER RRCA RECORD YEAR FOR SUSTAINABLE DEVELOPMENT

The RRCA continued supporting sustainable development in 2022 by working with municipalities, businesses, farmers, developers, and property owners on a record 333 development applications, up from the previous record of 299 in 2021. These processes were vital to ensure development projects are safe from natural hazards such as flooding and erosion, and that natural heritage features are protected.



SOURCE PROTECTION COMMITTEE CHAIR RE-APPOINTED BY PROVINCE

Retired farmer and active community member, Raymond Beauregard, was re-appointed as Chair of the Raisin-South Nation Source Protection Committee by the Ontario Minister of Environment, Conservation and Parks under Ontario's *Clean Water Act, 2006*. The Act ensures that communities are able to protect their drinking water sources through the development of collaborative, locally driven, science-based source protection plans for watersheds across the province.



SOUTH GLENGARRY DONATES 115 ACRES OF FORESTS TO RRCA

The Township of South Glengarry donated a combined 115 acres of forests at two sites in South Glengarry to the RRCA. The donation follows last year's gifting of a 100-acre wetland to the RRCA by the Township of South Stormont. The RRCA currently manages and conserves 1,853 acres of environmentally significant land in order to enhance forest cover, conserve sensitive ecological habitat, and provide recreational opportunities to the public.



RETURN OF RRCA'S RAISIN RIVER CANOE RACE

A total of 364 paddlers in 222 boats registered for RRCA's 49th annual Raisin River Canoe Race. The cold April weather did not dampen the festive atmosphere as paddlers of all ages, from near and far, entertained spectators along the 30-kilometre route. The Race had been put on hold for the last two years due to the COVID-19 pandemic. The fastest time was the Pro Boat Tandem of Mike De Abreu and Seb Courville (of Arnprior) at 2:10:50.



MANY ENHANCEMENTS AT COOPER MARSH CONSERVATION AREA

Through various projects and partnerships, RRCA's 663-acre Cooper Marsh Conservation Area received multiple enhancements, including renovations to its Visitors Centre, new taxidermy displays, a grassland restoration, the seeding of native wild rice, waterfowl nesting boxes, a parking lot reconstruction, wayfinding trail signs and markers, the initiation of major structural maintenance to its system of ring dykes and pumps, and more.

RRCA BY NUMBERS

- Established in **1963** to address local flooding, drainage, and water supply concerns
- **1,680** km² watershed jurisdiction
- Owns and protects **1,853** acres of environmentally significant land
- **86,500** residents
- **5** member municipalities
- **8** municipally-appointed board members
- **3** Conservation Areas

IN 2022

- **333** development applications processed
- **58,000** trees planted
- **180,000** Conservation Area visitors
- **7** flood statements issued
- **0** low water response statements issued
- **13** summer students hired



SCAN TO SEE ALL RRCA NEWS



RRCA regulations and planning reviews help protect against natural hazards such as flooding and erosion.

Under the *Conservation Authorities Act* and the *Planning Act*, Conservation Authorities review development near or within shorelines, floodplains, and erosion-prone areas in their jurisdiction in order to protect people, property, and the environment. Additionally, the RRCA protects local drinking water sources from contamination and overuse under the Drinking Water Source Protection program.

In 2022, the RRCA began work on a project to update the floodplain mapping for the Eastman Drain watershed, in South Stormont and the City of Cornwall.

RRCA also entered into a planning review partnership with its neighbouring Conservation Authority, South Nation Conservation, to further increase planning review efficiency in South Stormont and North Stormont while also providing significant cost savings to residents.

The RRCA is also the lead agency in the Cornwall Sediment Strategy, a component of the St. Lawrence River Remedial Action Plan designed to prevent the disturbance of several zones of sediment along the Cornwall waterfront.



RRCA staff conducting a site inspection at the Eastman Drain in South Stormont.



There are 26 municipal drinking water systems within the Source Protection Region of which 13 are groundwater systems and 13 are surface water systems.

SUSTAINABLE DEVELOPMENT ACTIVITIES

- 178** PLANNING ACT APPLICATION REVIEWS
- 154** PERMITS ISSUED UNDER THE CONSERVATION AUTHORITIES ACT
- 106** DRINKING WATER SOURCE PROTECTION PROGRAM RISK MANAGEMENT OFFICE SCREENINGS
- 33** PROPERTY INQUIRIES
- 1** CORNWALL SEDIMENT STRATEGY REVIEW



SCAN TO SEE WHICH DEVELOPMENT ACTIVITIES REQUIRE A PERMIT FROM THE RRCA



Community tree planting held in partnership with the City of Cornwall, and supported by the Government of Ontario's Community Environment Fund and Earth Day Canada.



A young angler proudly displays a pumpkinseed caught during RRCA's 2022 Family Fishing Day.

STEWARDSHIP PROJECTS, OUTREACH & INCENTIVES

1,736
OUTREACH & EDUCATION PARTICIPANTS

281
NEW ACRES DEDICATED TO ALUS PROJECTS

79
ACRES RENEWED FOR ALUS PROJECTS

41
ALUS AGRICULTURAL STEWARDSHIP PROJECTS

21
LANDOWNERS PARTICIPATING IN ALUS PROJECTS

10
ADVISORY SERVICE GRANTS TO LOCAL FARMERS

6
COMMUNITY TREE PLANTING EVENTS

4
COOPER MARSH BIODIVERSITY PROJECT WORKSHOPS

3
COMMUNITY PRESENTATIONS



1.1 M
TREES
PLANTED
SINCE
1994

58,000 TREES
PLANTED IN
2022



RRCA monitoring a grassland project site in North Glengarry.



RRCA staff planting trees in North Stormont.



Aquatic macroinvertebrate sampling workshop at Cooper Marsh Conservation Area.

In 2022, RRCA engaged the local community in conservation through various outreach and recreation opportunities, including workshops and presentations, a family fishing day, a canoe race, free tree giveaways, an ongoing geocaching tour, and more.

The RRCA also fosters stewardship in its jurisdiction by offering tree planting services and incentives, leading various projects within the St. Lawrence River Area of Concern, and facilitating the implementation of agricultural best management practices. The RRCA is also the lead for the ALUS (Alternative Land Use Services) Ontario East program.

SCAN TO LEARN MORE ABOUT THE RRCA'S FORESTRY SERVICES

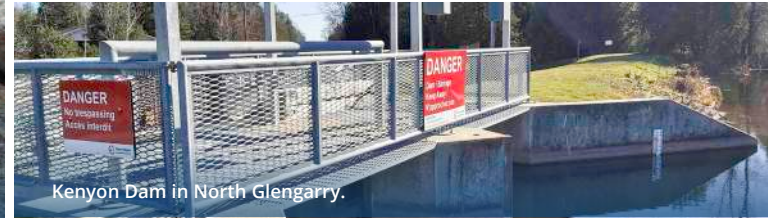




The Flood Forecasting and Warning program provides municipalities with advance warning of potential flooding.



RRCA staff conducting a snow survey in South Stormont.



Kenyon Dam in North Glengarry.

The RRCA's jurisdiction encompasses 1,680 km² of Eastern Ontario, which includes several watersheds and tributaries to the St. Lawrence River.

The RRCA's watershed management includes operating and maintaining eight water control structures, conducting various water quality and quantity monitoring, and providing a Flood Forecasting and Warning and Low Water Response program.

MONITORING NETWORKS

10

STREAM GAUGE MONITORING SITES

9

PROVINCIAL GROUNDWATER MONITORING WELLS

9

PROVINCIAL SURFACE WATER QUALITY MONITORING NETWORK SITES

2

SNOW SURVEY MONITORING SITES

WATER CONTROL STRUCTURE PROJECTS

LOCH GARRY DAM	KENYON DAM	MILL POND DAM	COOPER MARSH RING DYKES
Annual dam inspection	Annual dam inspection	Detailed structural inspection	Earthen berm repairs
Vegetation removed from earthen berms	Vegetation removed from earthen berms		

FLOOD AND DROUGHT MESSAGES

3 Water Safety Statements

3 Flood Outlook Statements

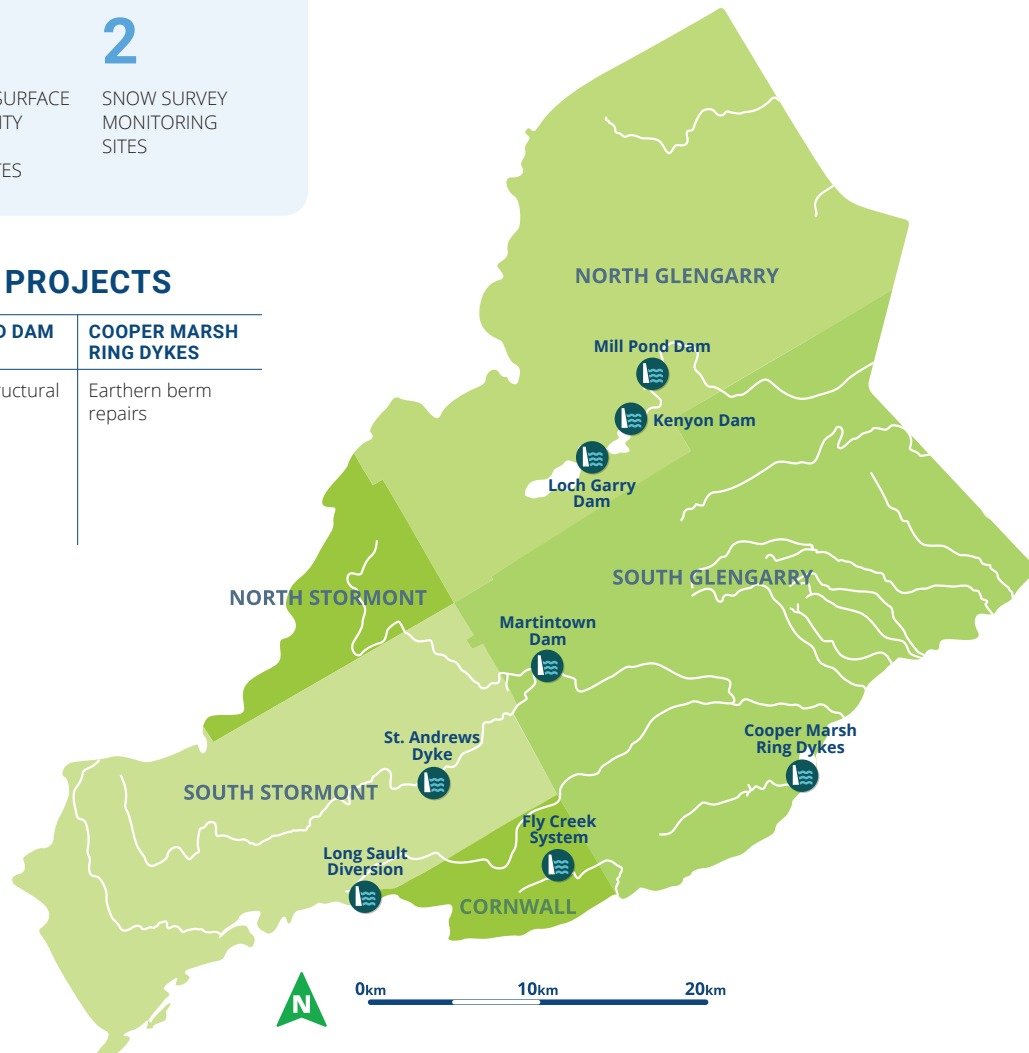
1 Flood Watch

0 Flood Warnings

0 Low Water Responses Level 1

0 Low Water Responses Level 2

0 Low Water Responses Level 3



SCAN TO SEE THE RRCA'S CURRENT FLOOD STATUS INDICATOR



180,000 TOTAL VISITORS IN 2022



Gray's Creek Marina

GRAY'S CREEK

- **106,000** visitors
- **210** trees planted
- Installation of wayfinding trail signs and markers
- **6** dock replacements
- Hosting of Family Fishing Day event
- Introduction of new point of sales system



Charlottenburgh Park Campground

CHARLOTTENBURGH PARK

- **24,000** visitors
- Additional campground lots provided with water, electrical upgrades, and gravel pads
- Construction of additional visitors parking lot
- Installation of wayfinding trail signs and markers
- Launch of new online camping reservation system
- Site of first South Glengarry Haunted Drive hosted by Optimist Club of Lancaster



Cooper Marsh Conservation Area & Cooper Marsh Visitors Centre

COOPER MARSH

- **50,000** visitors
- Reopening of Visitors Centre post-COVID-19 pandemic
- Parking lot reconstruction
- Visitors Centre received new taxidermy displays, lighting system, and various other enhancements
- Grassland restoration and wild rice seeding
- Installation of wayfinding trail signs and markers
- Strengthening of earthen berms

The RRCA owns and manages 1,853 acres of environmentally significant properties, including three Conservation Areas which enable residents and visitors to step into nature through various amenities such as park and picnic areas, wildlife viewing blinds and platforms, a marina, campground, interpretive centre, and a combined 25 kilometres of nature trails.

In 2022, RRCA renewed its successful and longstanding partnership with Ducks Unlimited Canada to maintain the system of ring dykes and pumps at Cooper Marsh Conservation Area. RRCA also continued various habitat enhancement projects at the Marsh through the Cooper Marsh Biodiversity Project. This project was undertaken with the financial support of the Nature Smart Climate Solutions Fund, a Government of Canada's Department of Environment and Climate Change program in partnership with Conservation Ontario. Funding support has also been provided by Ontario Power Generation.

RRCA also continued to restore and enhance the Gambhir Memorial Forest, an urban forest located in the City of Cornwall and donated to the RRCA by Dr. Indu Gambhir.



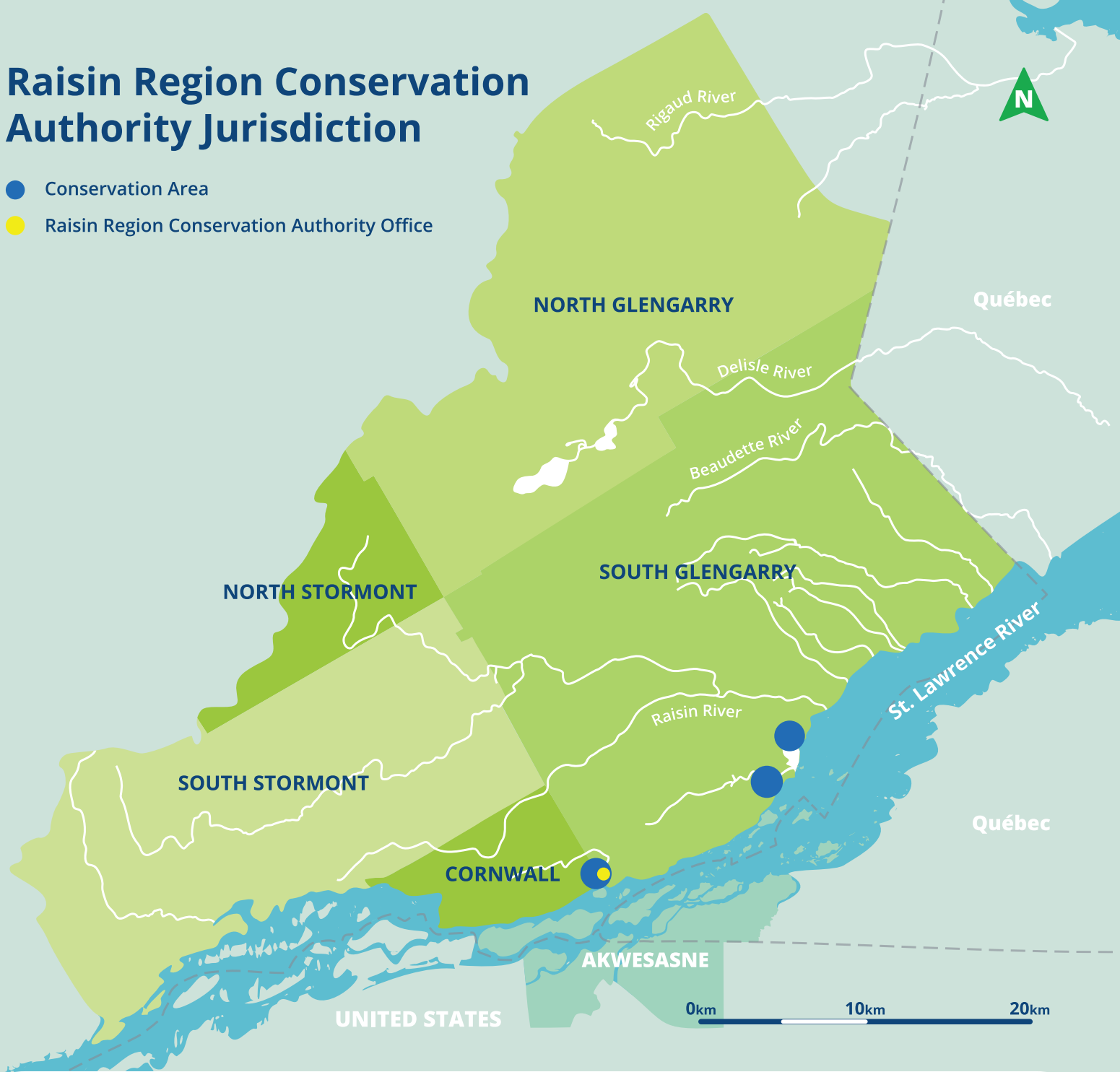
Tree planting event at the Gambhir Memorial Forest.



SCAN TO LEARN MORE ABOUT THE RRCA'S 3 CONSERVATION AREA

Raisin Region Conservation Authority Jurisdiction

- Conservation Area
- Raisin Region Conservation Authority Office



**Raisin Region
Conservation Authority**

Guiding our community in the protection, enhancement and restoration of our natural environment through programs that balance human, environmental and economic needs for a sustainable future.

 @raisinregion



Scan to subscribe to the RRCA's Monthly Newsletter

18045 County Road 2, Cornwall, ON K6H 5T2
(613) 938-3611
info@rrca.on.ca
rrca.on.ca

Member of

